



toitotoi

Hawke's Bay Arts & Events Centre

Opera House

Theatre Specifications

Theatre Information

979

Capacity
(for sale 965)

493

Stalls

Green Room

Upstairs, Backstage
(includes Fridge,
Microwave &
Kitchen facilities)

222

Dress Circle

364

Grand Circle

Parking

Limited parking available at back of theatre off Eastbourne Street

Mix Position

FOH control position is located at the rear of the stalls area

Comms

Altair wireless comms system between all standard operating areas

Performance relay and backstage paging

Paging is located from the stage managers desk and full performance relay to dressing rooms

Hearing Loop

Hearing loop is available

Power positions and hookup

160a Soundamp tapoff power lock connection is located DSR

2 x 32a pdl Technical power located DSR

250a LX Tapoff located in dimming room CSL. Please see diagram below.

Electrical equipment

Toitoti Equipment is checked for use and carries current test tags, it is expected that all off site equipment also complies with this, venue staff reserve the right of refusal where it may be deemed that unsafe equipment is being patched into the system.

Maximum sound Pressure levels

Sound may not exceed acceptable level as deemed by the Acting House technician and the operator must comply with any reasonable request to adjust levels

Access equipment

1 man Geni lift 10m height

Flying

Any client/ operator needing to work the fly system in the venue must have sign off by the Duty, House Technician

Rigging

All rigging must be signed off by the acting Duty House Technician prior to any item being hung in the venue.

All rigging must comply with the minimum 5:1 safety factor, 10:1 where people are to be flown

Stage Specifications

Proscenium Opening	9.1m
Proscenium Height	7.2m
Fire Curtain to front of stage	1025mm
Fire Curtain to Set Line (House Rag)	495mm
Setline to Back Blocks	12575mm
Setline to back Wall (column Faces)	13000mm
PS Wall to OP Pack Frame	19650mm
Width between Flyfloor Galleries	13478mm
Height to underside of grid (DS)	16432mm
Rake	1.5degrees
Stage Construction	Ply Sheets

Line Sets

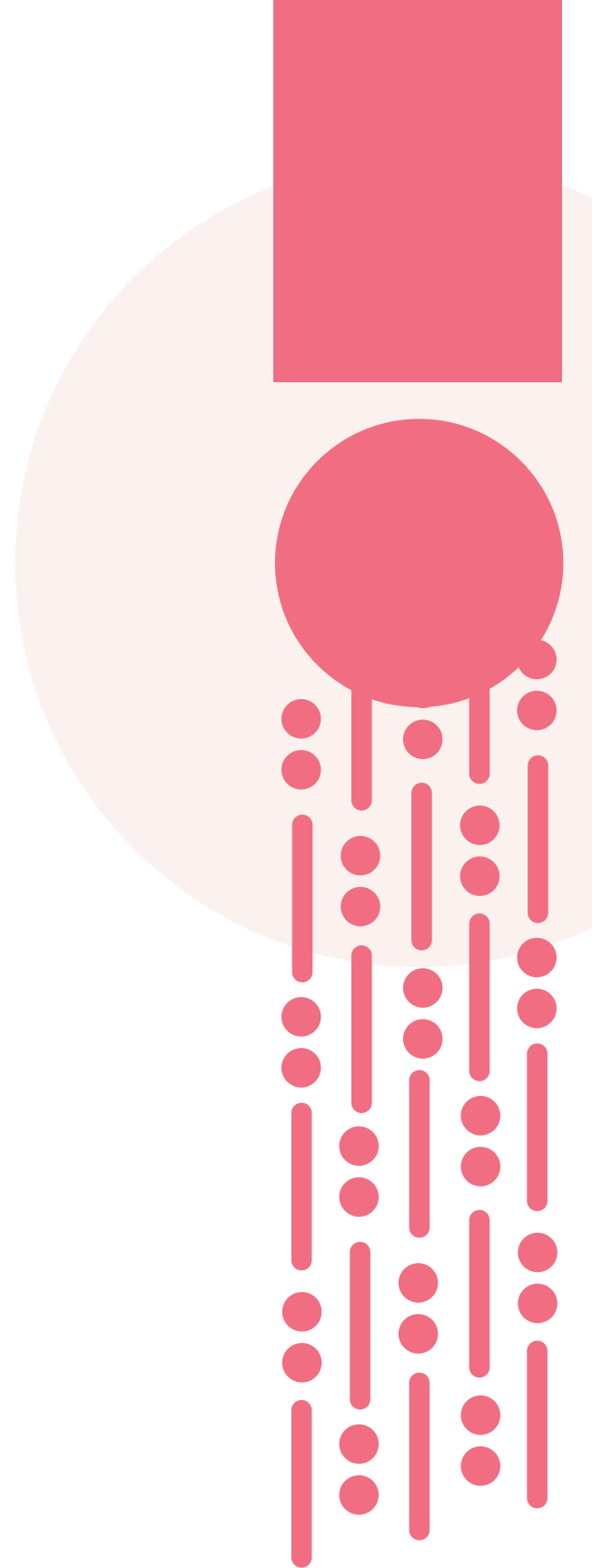
1 x	Fire Safety Curtain
61 x	Manually Operated Counterweight Sets
2 x	Panorama Bars Safety Factor 5 : 1

Battens

Batten Dimensions	75 x 50mm
Batten Length	12400mm
Lineset Spacing (Average)	195mm
Empty batten weight	2 of 15 Kg weights
Maximum distributed load on battens	450kg
Maximum point load on Batten	200kg
Maximum out of balance load on rope lock	60kg

Counterweights

Maximum payload in cradle	450kg	
15 Kg Weights	1290	19350kg
5 Kg Weights	120	600kg
Total of weights = 19950 Kg		



Stage Specifications

Proscenium Opening	9.1m
Proscenium Height	7.2m
Fire Curtain to front of stage	1025mm
Fire Curtain to Set Line (House Rag)	495mm
Setline to Back Blocks	12575mm
Setline to back Wall (column Faces)	13000mm
PS Wall to OP Pack Frame	19650mm
Width between Flyfloor Galleries	13478mm
Height to underside of grid (DS)	16432mm
Rake	1.5degrees
Stage Construction	Ply Sheets

Line Sets

1 x	Fire Safety Curtain
61 x	Manually Operated Counterweight Sets
2 x	Panorama Bars Safety Factor 5 : 1

Battens

Batten Dimensions	75 x 50mm
Batten Length	12400mm
Lineset Spacing (Average)	195mm
Empty batten weight	2 of 15 Kg weights
Maximum distributed load on battens	450kg
Maximum point load on Batten	200kg
Maximum out of balance load on rope lock	60kg

Counterweights

Maximum payload in cradle	450kg	
15 Kg Weights	1290	19350kg
5 Kg Weights	120	600kg
Total of weights = 19950 Kg		

Suspension Ropes

Each batten is suspended off 4 x 6mm galvanised wire rope, 6x19 fibre cored. Breaking load 2000 Kg

SWL 400 Kg

Operating Rope

Each line set has 1 of 24 mm manila rope, breaking load 4000 Kg

SWL 800 Kg

Grid Block

220mm diameter Nylatron GSM Sheave, fitted with fully sealed Bearings

SWL 400 Kg

Idler Block

220mm diameter Nylatron GSM Sheave, fitted with fully sealed Bearings

SWL 300 Kg

Head Block

270mm diameter Nylatron GSM Sheave, fitted with fully sealed Bearings

SWL 550 Kg

Cradles

Cradle guides are UHMWPE, Ultra High Molecular Weight Polyethylene,

The equipment listed below is the full list of equipment owned by the venue but is not necessarily available. Listing this equipment does not indicate its inclusion in the venue or hire charges. Please inquire as to what is available at the time of your show.

Toitoti Theatre Sound Kit

FOH System

24 L/R flown Adamson IS7 array element
8 Adamson IS119 subwoofer element (ground)
2 Adamson IS7P point source speaker
Adamson PC5 point source speaker (Front fill & under balcony)
Lab Gruppen D200:4L Amplifier 1
Lab Gruppen D80:4L Amplifier 4
Lab Gruppen D40:4L Amplifier
FOH Console Digico SD12 Audio Console

Other sound equipment on site POA.

1 Soundcraft Expression
16 Sennheiser EW 500 G4-945 – Handheld System BW Band
16 Sennheiser SK 500 G4 Bodypacks – BW Band
3 Sennheiser E604
2 Sennheiser E902
2 DPA 4098-DL-G-B01-045 Gooseneck microphone
6 Shure B58a Handheld Microphone
6 Shure SM58 Handheld Microphone
6 Shure SM57 Microphone
6 JDI- Passive Direct Box- Radial Engineering
6 DB Technologies Opera Powered speakers
2 DB Technologies single 18 powered Subs
12 K&M Mic stands
8 K&M Short Mic stands
3 Lecterns

Toitoti – THEARE LAMP NUMBERS

30 Chauvet Ovation F-915FC RGBAL full colour Led Fresnel with barn door
20 Chauvet Ovation E-910FC RGBAL full colour Led Profile with Zoom lens
16 Chauvet Maverick MK2 Profile moving spot
8 Chauvet Ovation B-1965FC - RGBAL 1.2M long 400W led cyc batten
2 Strong Lighting iChip Mirage 600W LED Followspot
16 Chauvet Ovation P-56FC RGBAL full colour theatre led par

ETC Gio



Digico SD12 Audio Console



Other Equipment

AV Lectern and microphone
12,000L Projector
6000L Projectors
Switching equipment,
Laptops, windows and mac
AV cabling

Staging

15x Stage Riser 2m x 1m
2x Stage Riser 1m x 1m

Trussing/ Rigging

Toitoti carries a variety of Rigging equipment 2m,2.5m box truss
½ Ton Chain motors
Soft steel slings